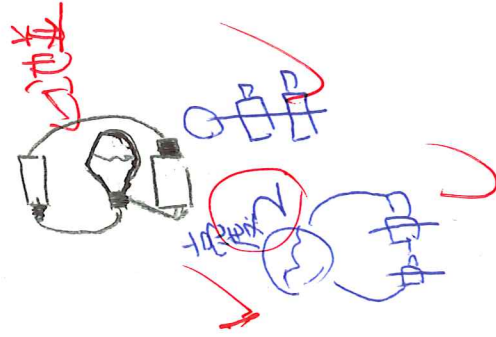


電池串聯



池串



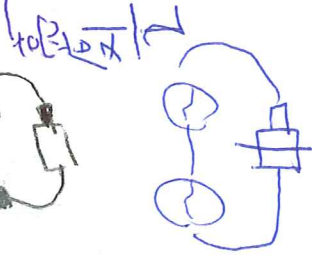
一條線

燈炮串聯

串聯看電池



一條線



串聯的掉一顆一樣不變

LED 長的接正極 短的接負極

李佩澄

李佩澄

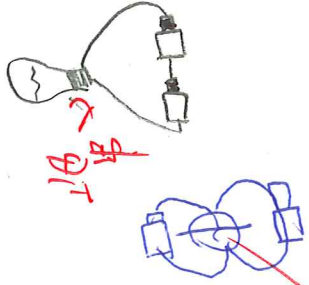
百章統帥好師

goodie

+25 太陽燈了!

5

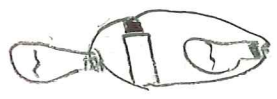
電池並聯



地串

電池 兩顆

燈炮並聯 並聯看燈炮



兩個燈炮

並聯的亮度

燈並聯只吃一碗飯

燈串聯吃到飽

池並聯持久且較長

池串聯較快

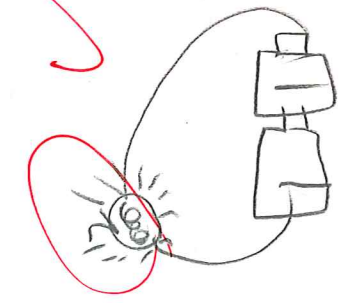
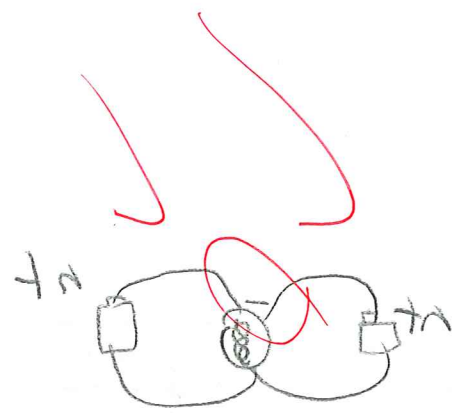
電池串聯時, 燈炮會比較亮

電池串聯時, 燈炮會比較亮

LED 的導電最強

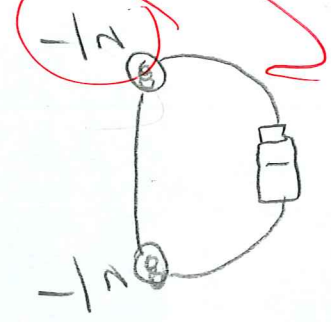
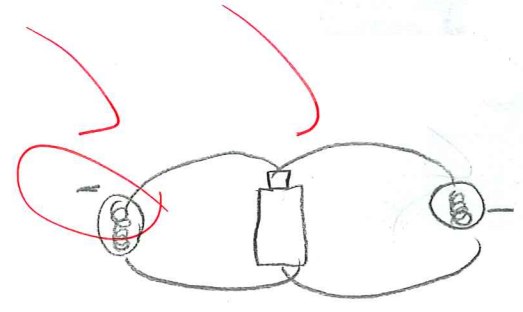
電池串

電池串



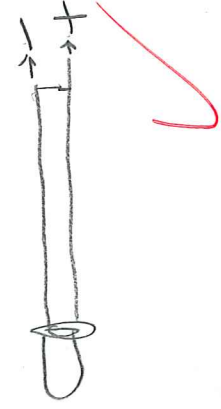
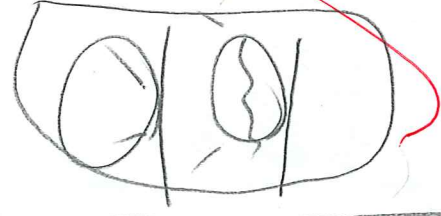
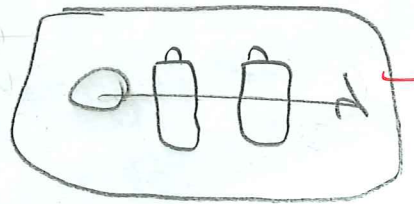
燈串

燈串



②

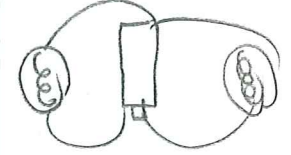
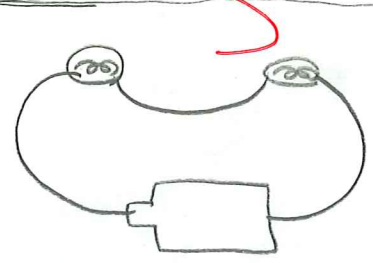
①



電池

燈串較暗

|       |     |
|-------|-----|
| 串聯較亮  | 較亮  |
| 並聯一樣亮 | 一樣亮 |



③

414

四221  
柱六



電池串聯  
 $1 \times 2 = 2$

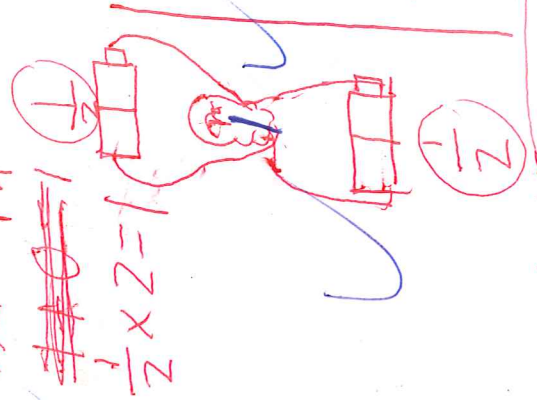
十亮



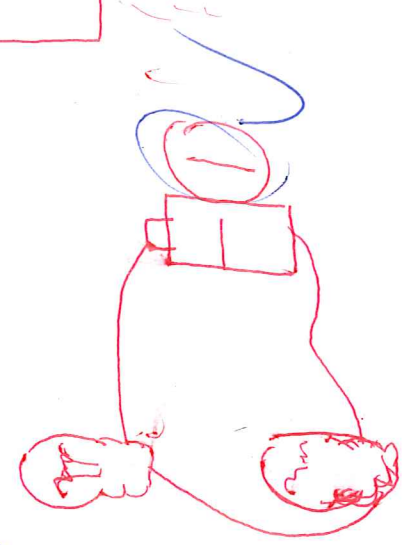
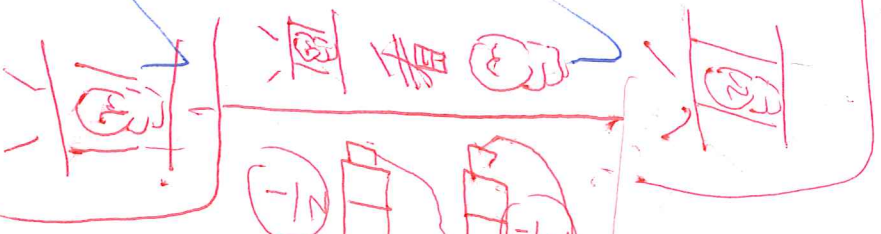
燈串聯

電池並聯  
 ~~$1 \times 2 = 1$~~   
 $\frac{1}{2} \times 2 = 1$

一樣

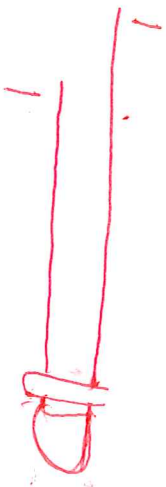


燈並聯



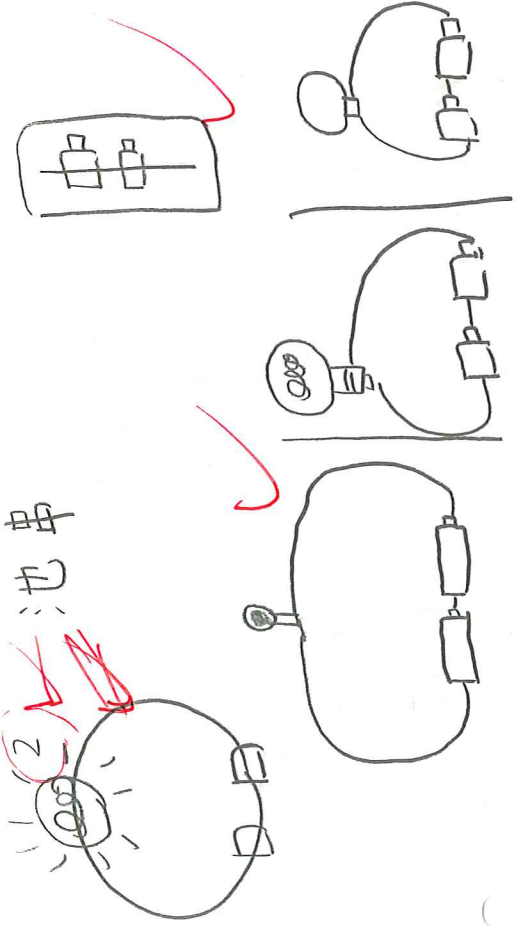
短腳

長腳

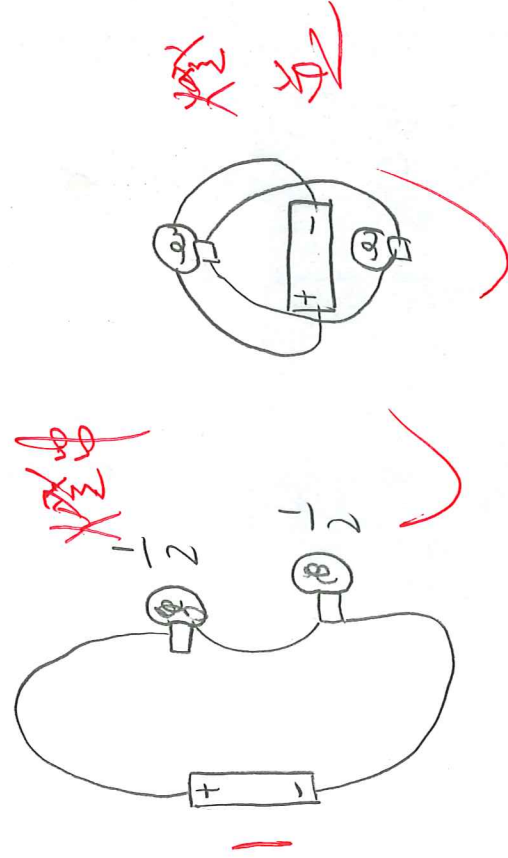
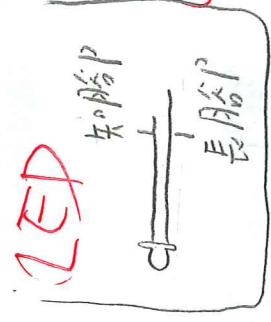
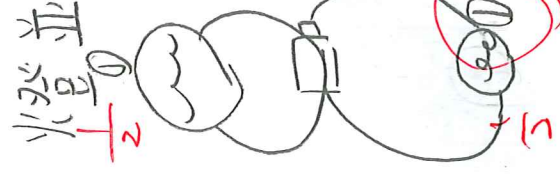
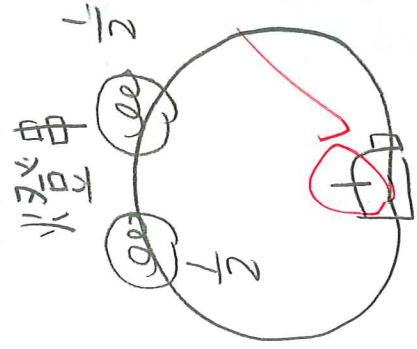
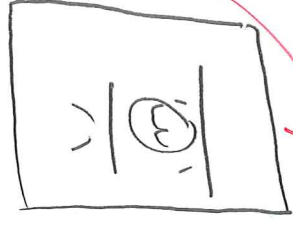
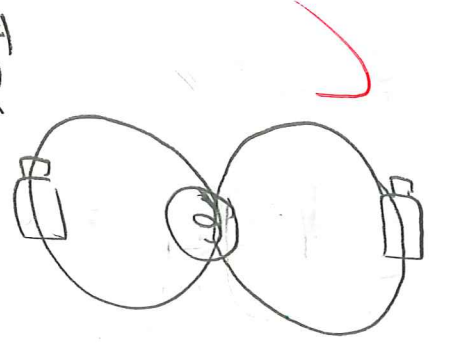


413 ③

池串



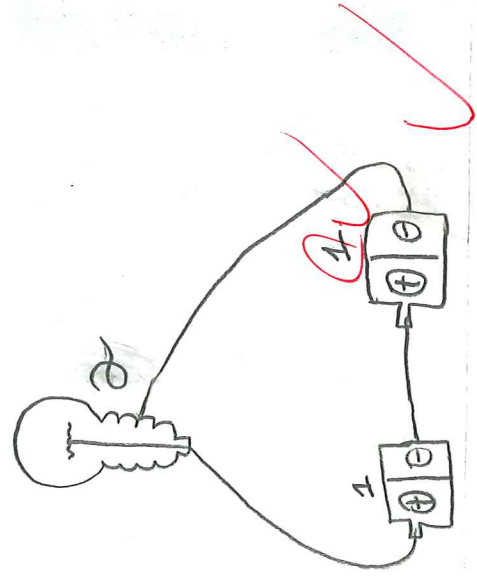
池並



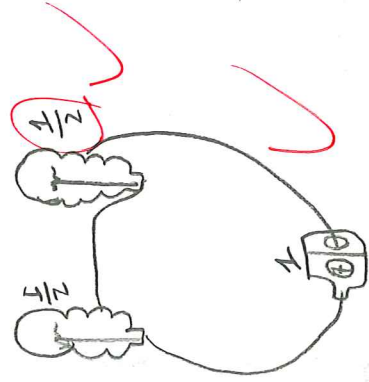
+13

3

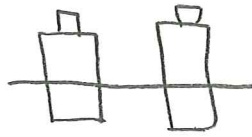
池串



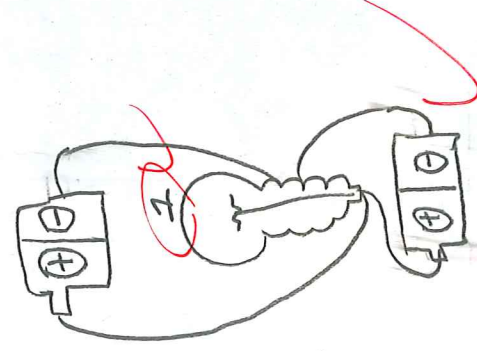
燈串



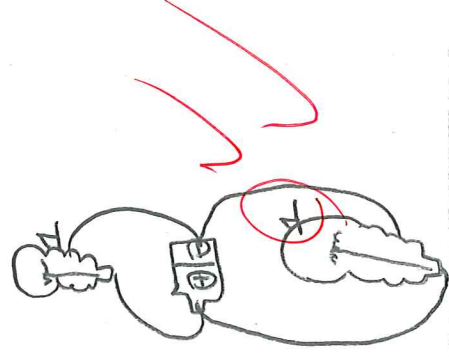
串耳絲看電池



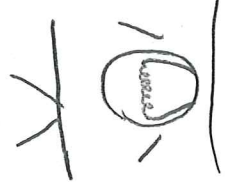
池並



燈並



並耳絲看燈泡



一樣亮  
短腳部 ⊖ ⊕ 正  
LED  
長腳部

銀 ①

銅 ②

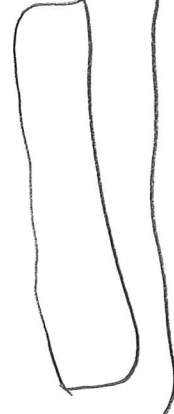
金 ③

鐵 ④

+ 13

LED 燈

短腳部接負極

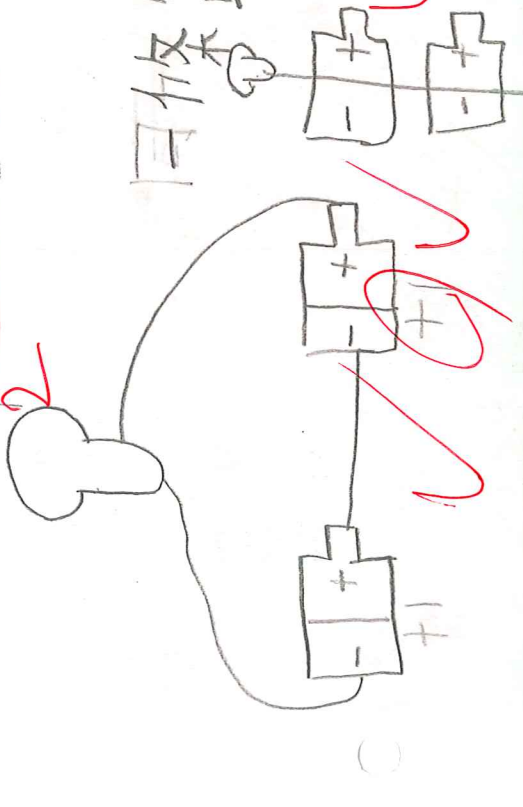


♡ ♡ ♡ ♡ ♡

四乙16 寫字: 市燈

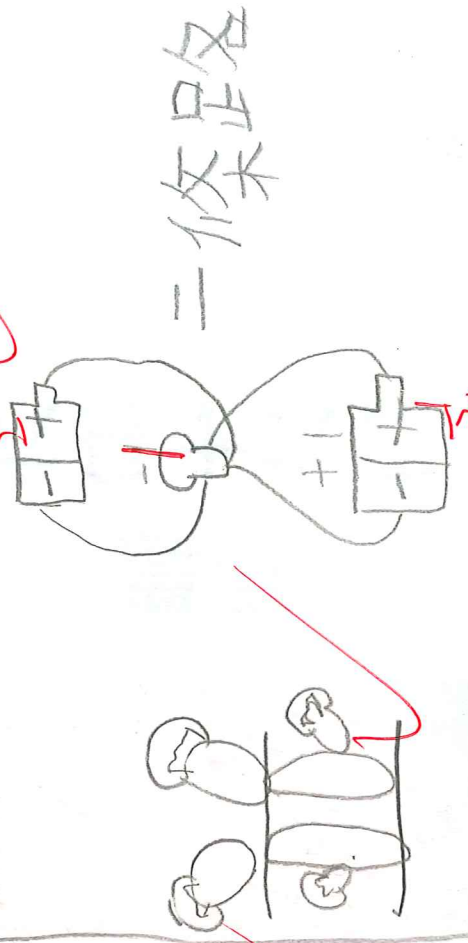


電池串聯: 比車交亮 ✓



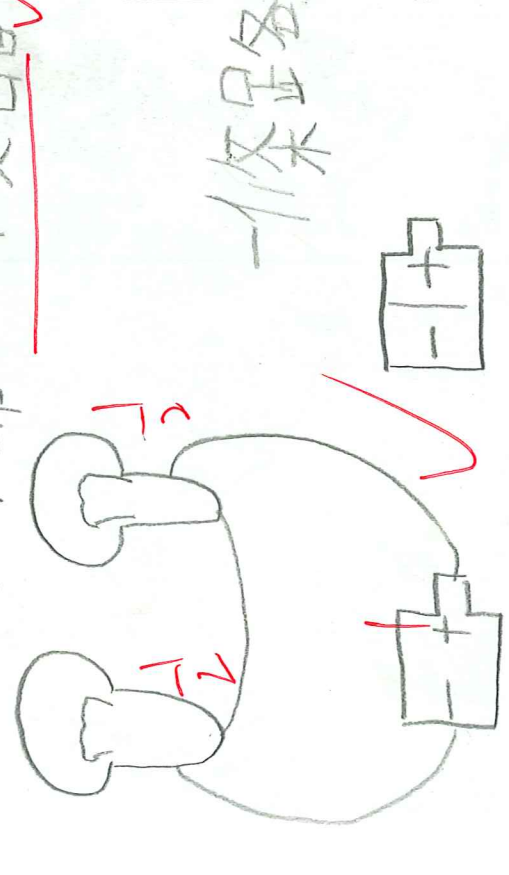
一條路

電池也並聯: 一樣亮 ✓



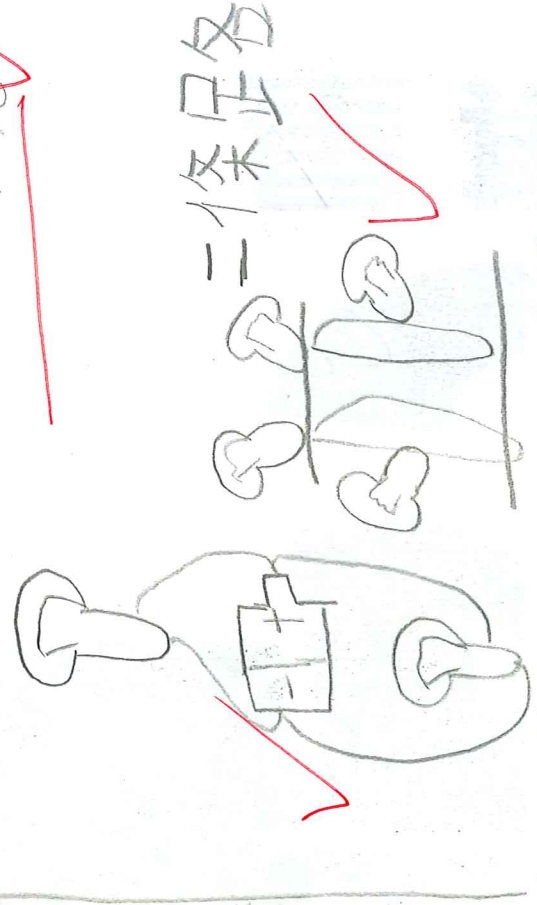
二條路

LED燈串耳給比車交暗 ✓



一條路

LED燈泡並聯: 一樣亮 ✓

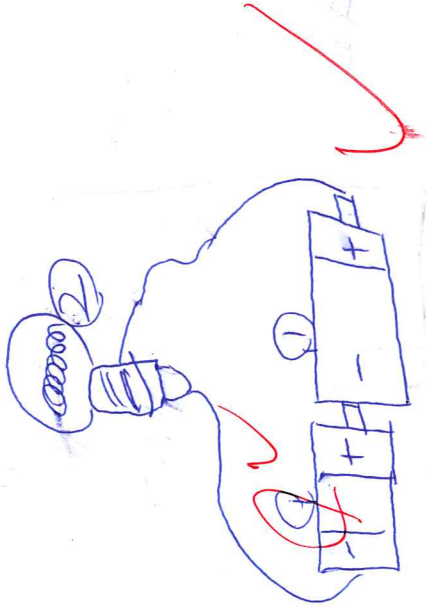


二條路

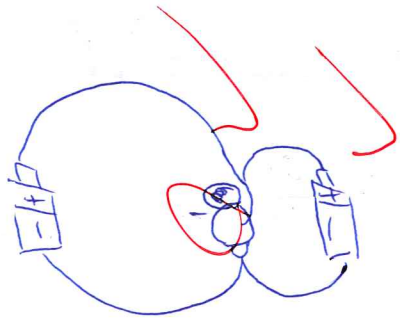
LED燈長腳卻接正極  
短腳接負極 ✓



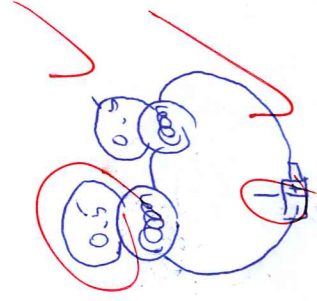
池串



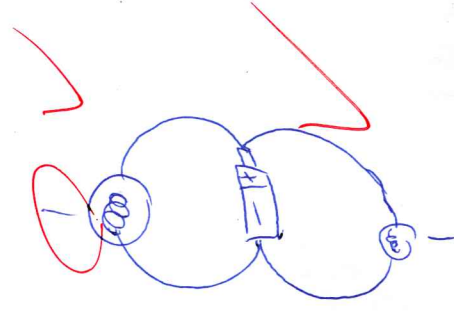
池並



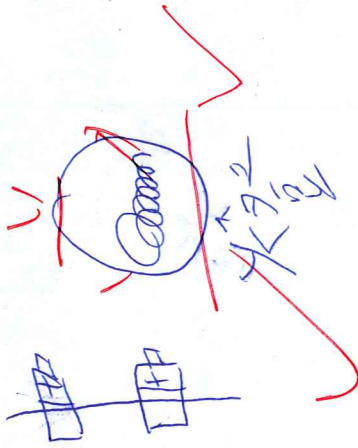
火燈串



池並



串



LED

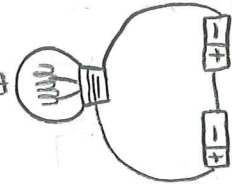


111

2

good

電池串聯

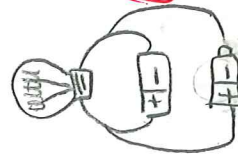


可以撐1小時、較亮

串聯看電池



電池並聯

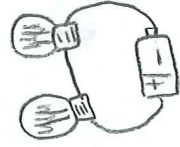


可以撐2小時、較暗

並聯看燈泡

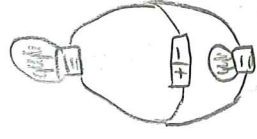


燈泡串聯



燈串

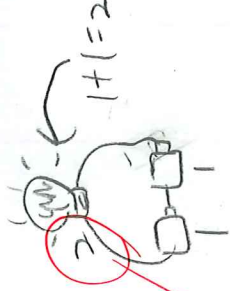
燈泡並聯



並

耗2倍的電量，撐一下就沒有電了。

電池串聯



電池並聯



串聯燈泡會改變亮度。

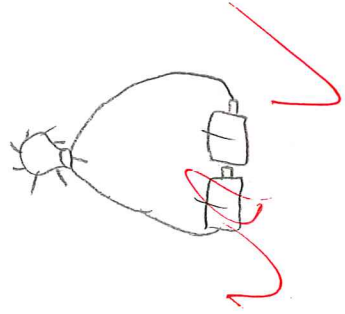


並聯燈泡不會改變亮度

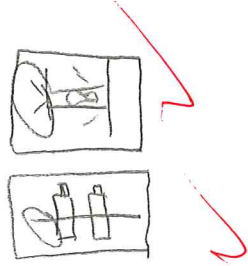
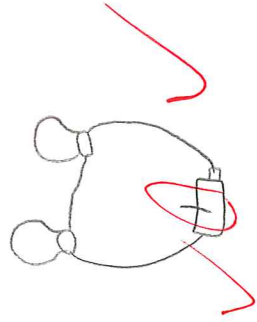
+11 2



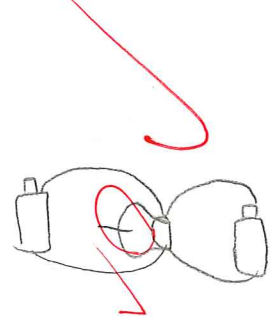
電池串聯



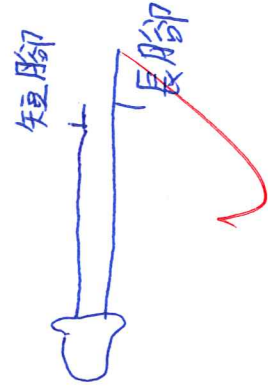
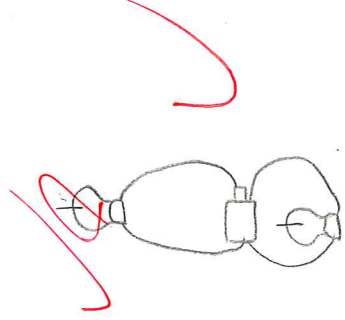
燈泡串聯



電池並聯



燈泡並聯



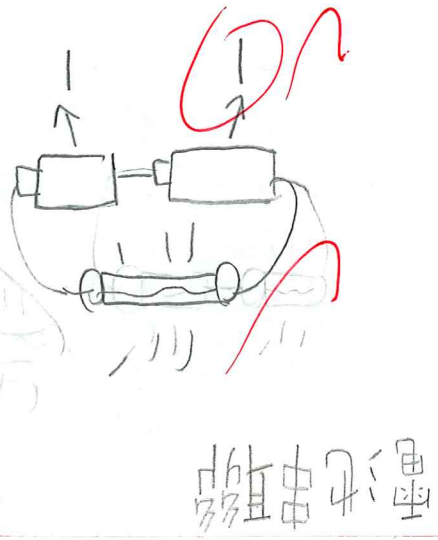
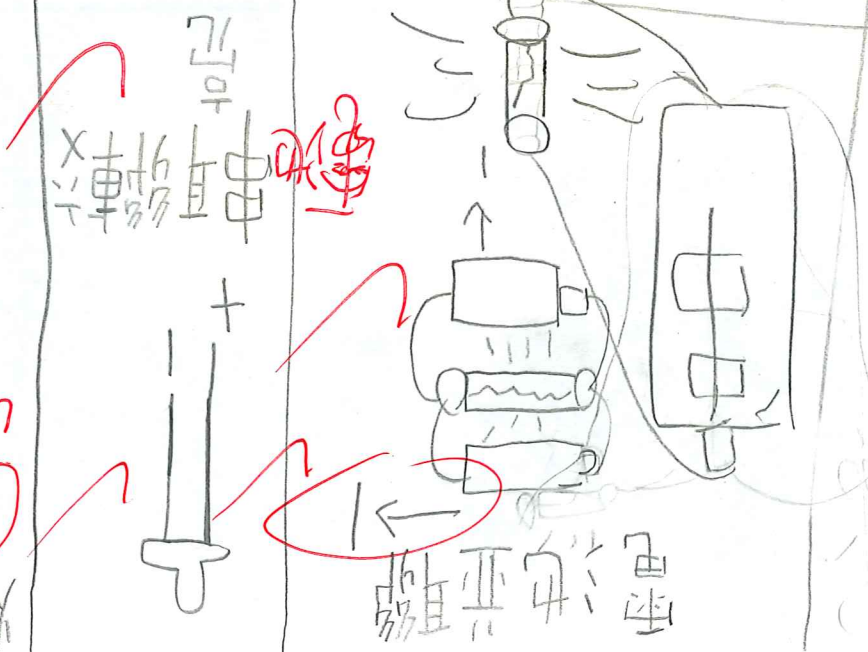
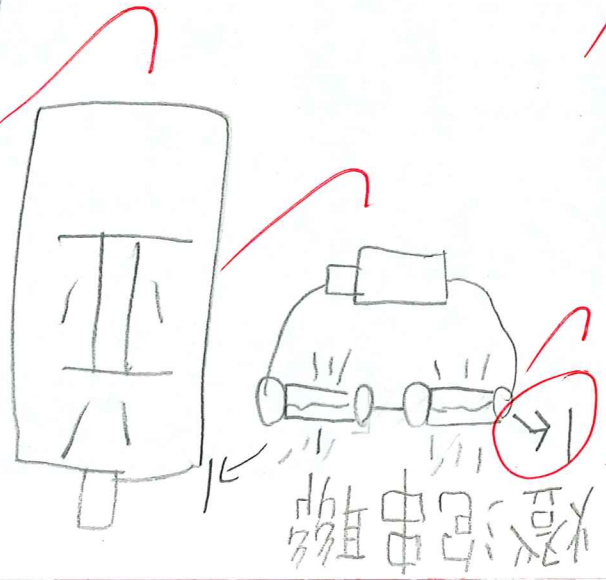
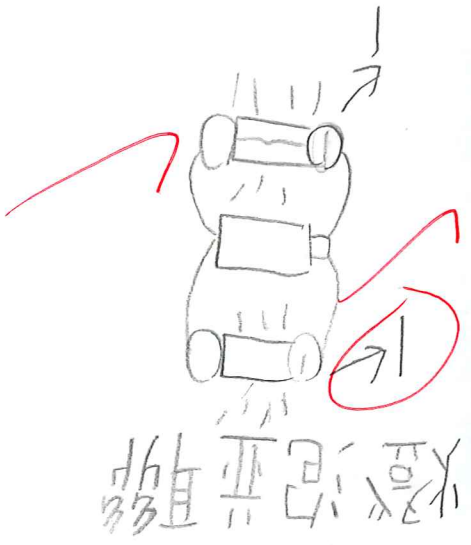
111  
②

2

4203 3 吳明利

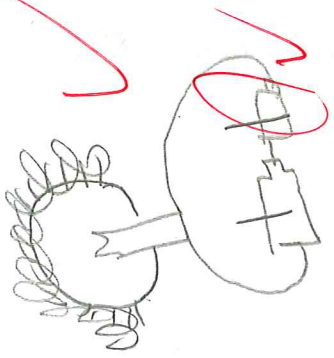
老師你好 1000000000000000000

117

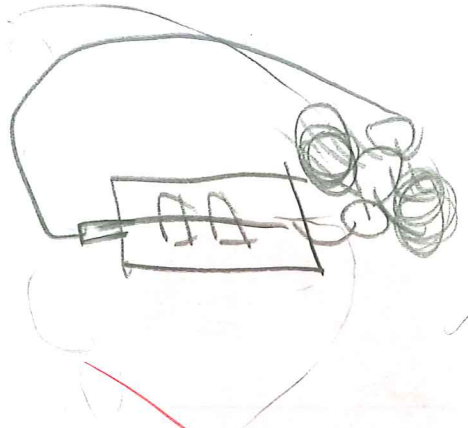
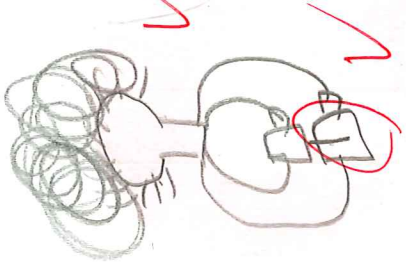


電池串

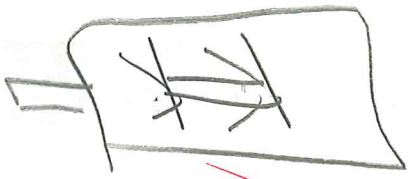
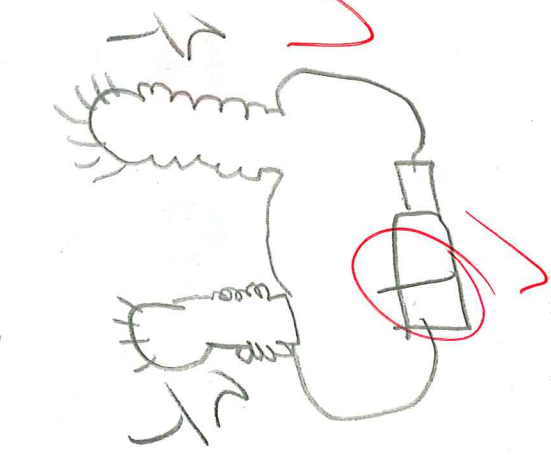
一條線



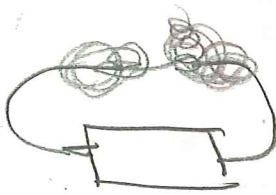
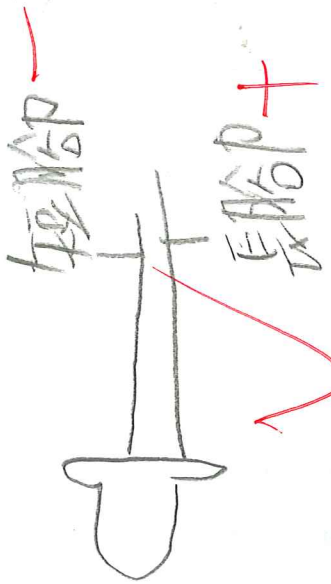
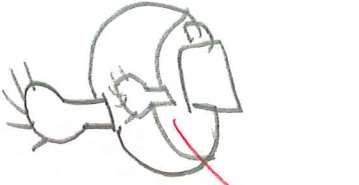
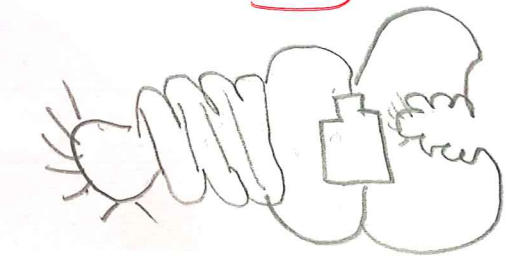
電池並聯



電池串



電池並聯



是什麼意思?

電池串聯較亮

並聯維持原來亮度

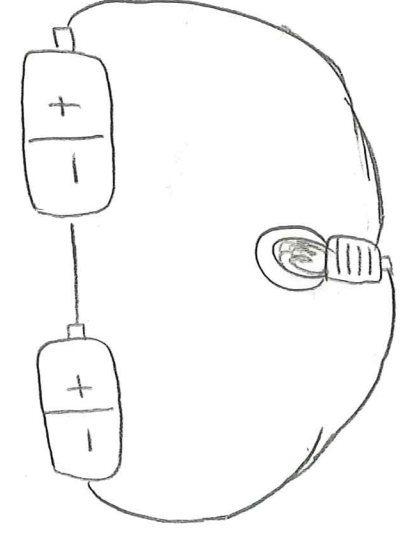
老師你好!!!

f10

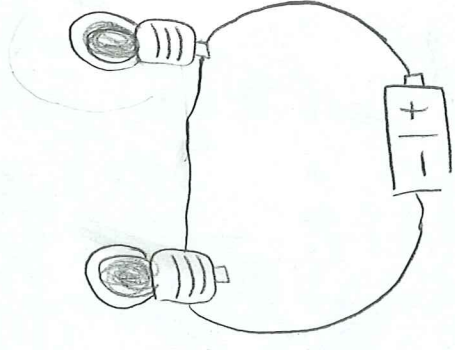
(2)



電池串



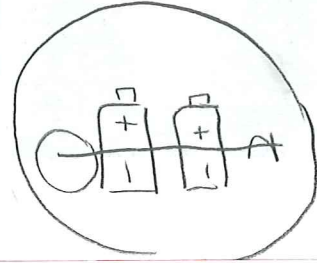
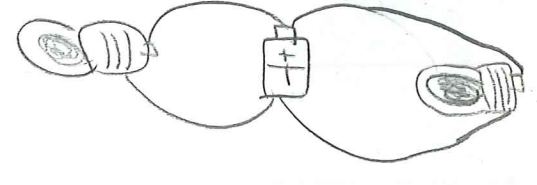
燈串



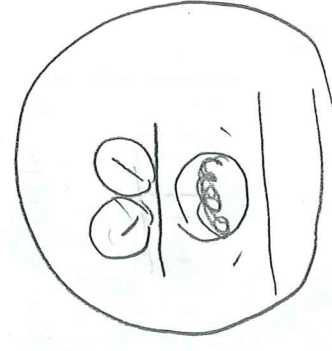
電池並



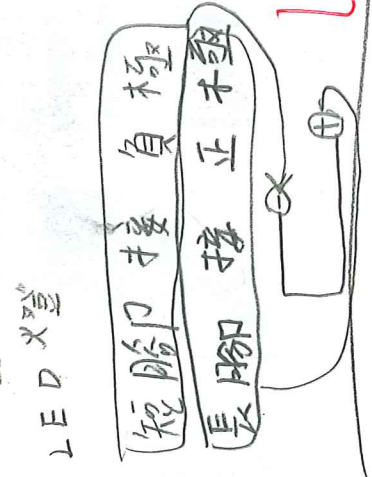
燈並



串聯電池



並聯燈泡



LED燈

- ① 自銀
- ② 銅
- ③ 鋁
- ④ 鐵

4 2 0 4

何巧靈

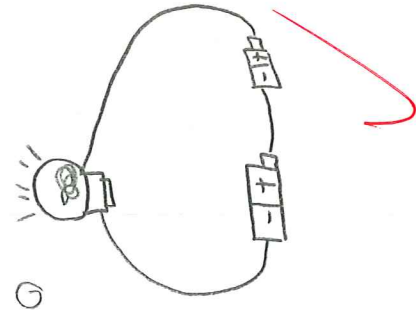
百章老師

你好師

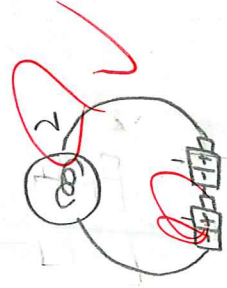
(開始)

學

電池串聯

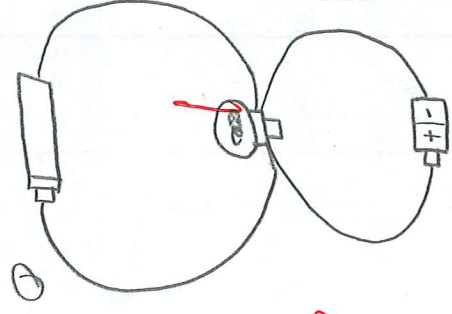


①

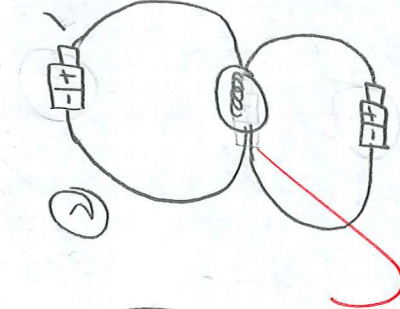


②

電池並聯

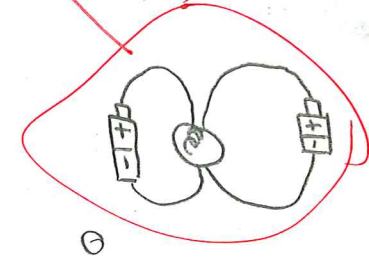


①

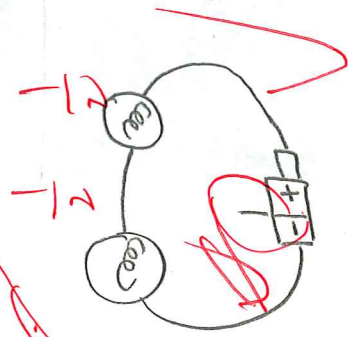


②

燈炮串聯

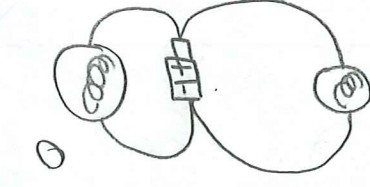


①

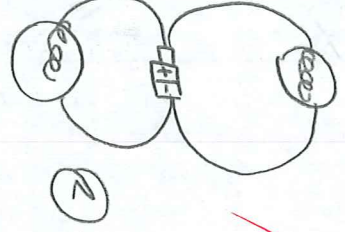


②

燈炮並聯

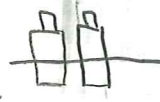


①

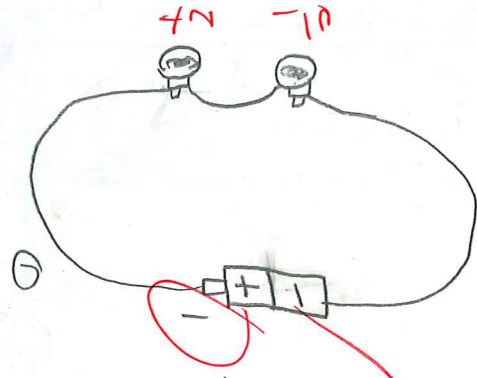


②

串聯

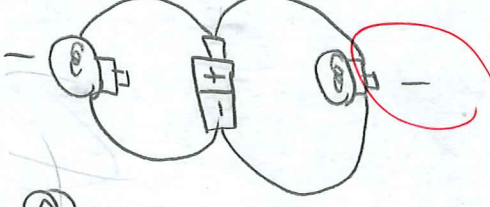


並聯



①

②

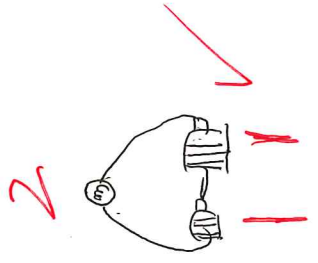


②

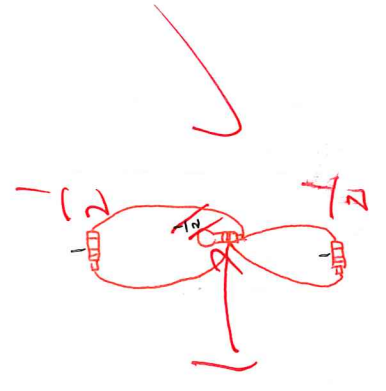
4 2 1 8 分

既 元 聖 生 1 8 分

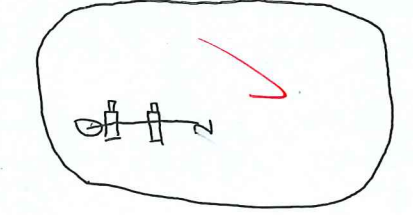
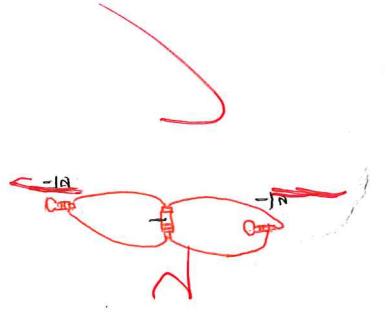
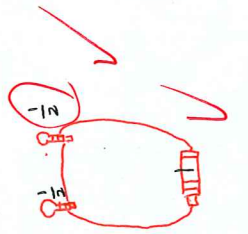
4 2 1 8 分



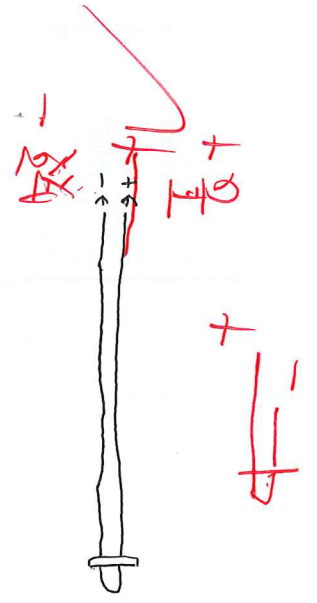
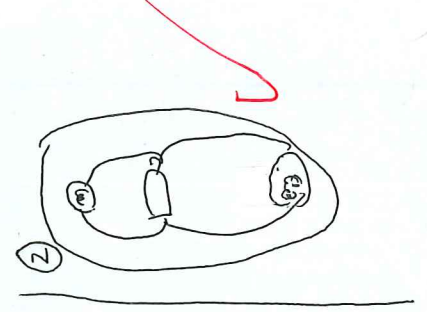
串联电池



串联灯泡

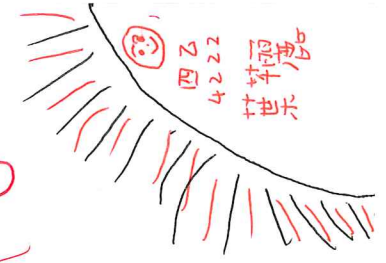


①



+8

①



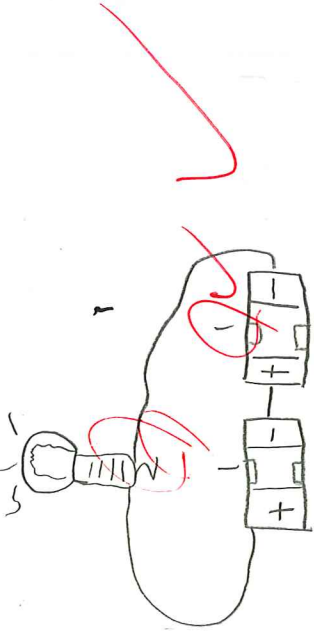
四六  
4222  
竹雨  
世天



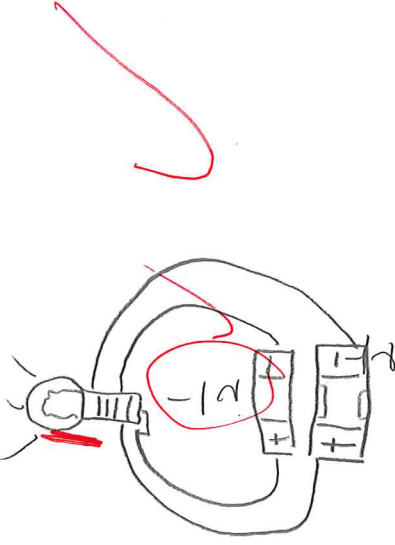
4 | 1 | 4

王鈺婷

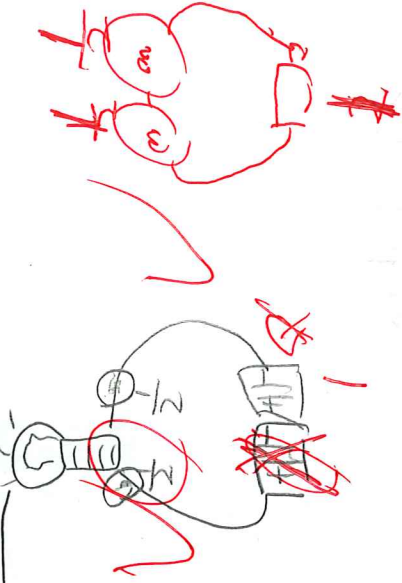
池串=電池串聯



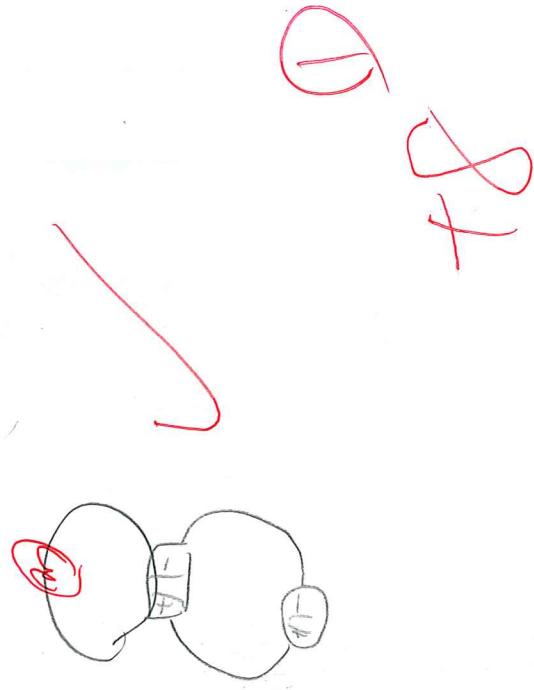
池並=電池並聯



燈串=燈泡串聯



燈並=燈泡並聯



① 銀 金屬

② 銅

③ 鋁

④ 鐵 性

百彰老師您好帥

yes!

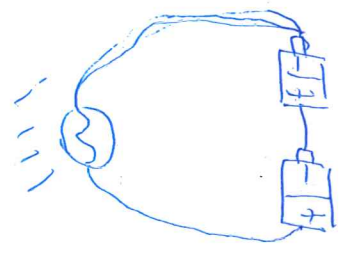
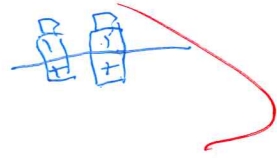
好帥! 世界上

最帥

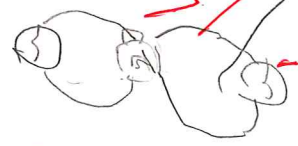
百彰老師好帥!  
好帥!  
百彰老師好帥!

謝謝, 我知道!

池串

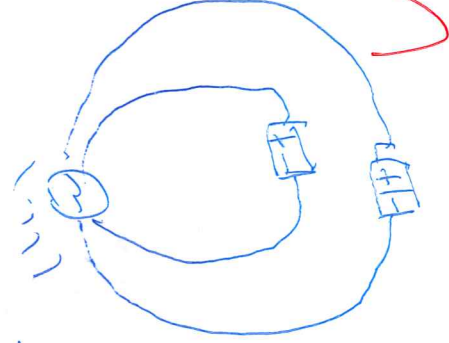
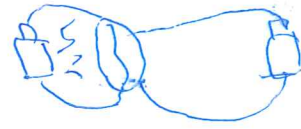


電池串聯



池並

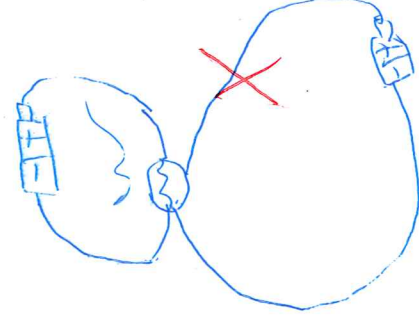
並



電池並聯

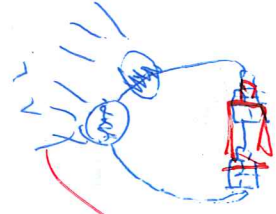
燈並

$\frac{1}{2}$



燈串

畫錯了



老師你好帥

電池串聯較亮

電池並聯不發

世真百影

4105

徐都棋

+80

容易導電的東西 ①銀 ②銅 ③鐵

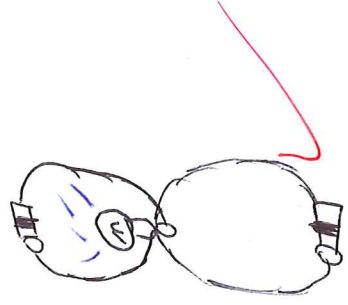
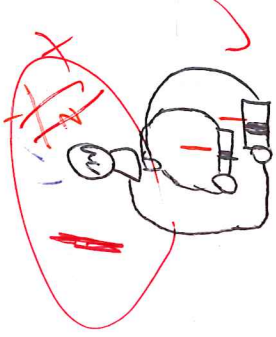
世真百影

4105

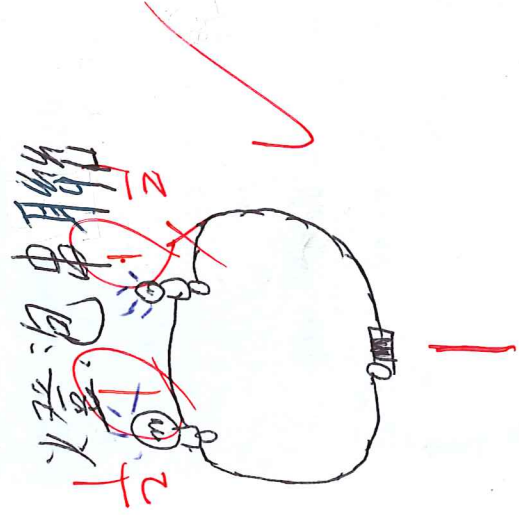
電池串聯



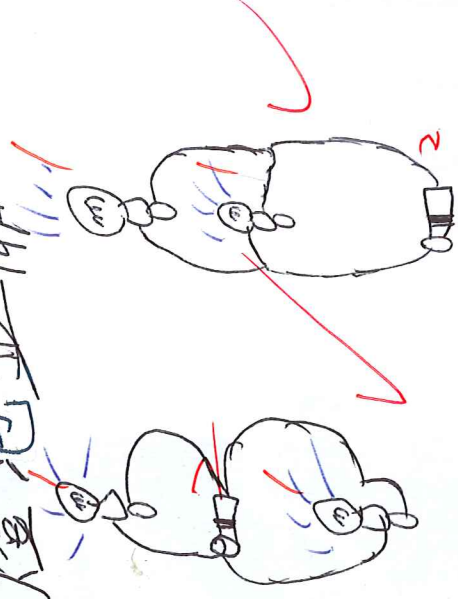
電池並聯



燈泡串聯



燈泡並聯



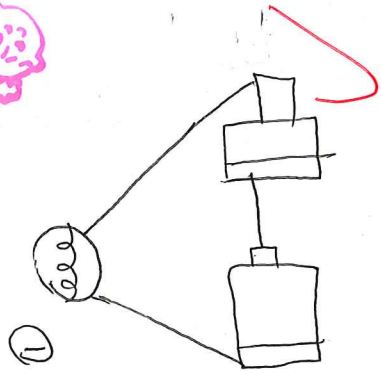
4219

李汶琇

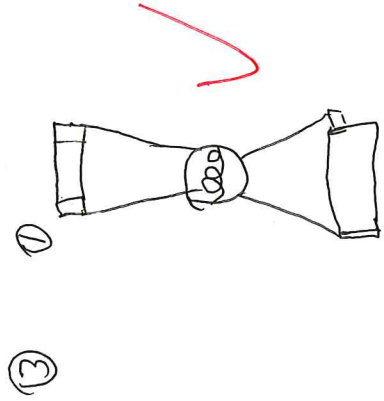
李汶琇



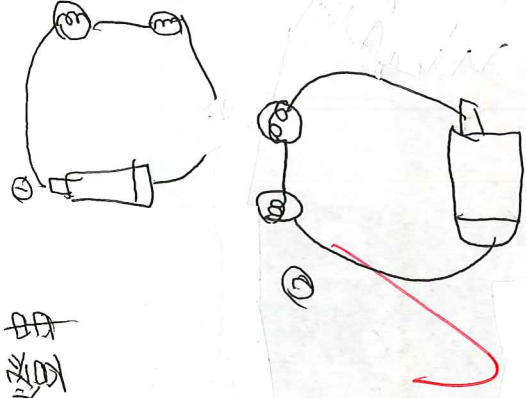
①池串



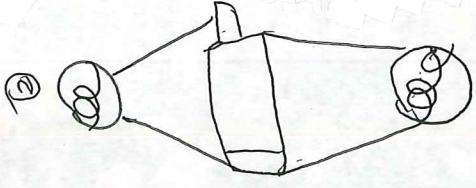
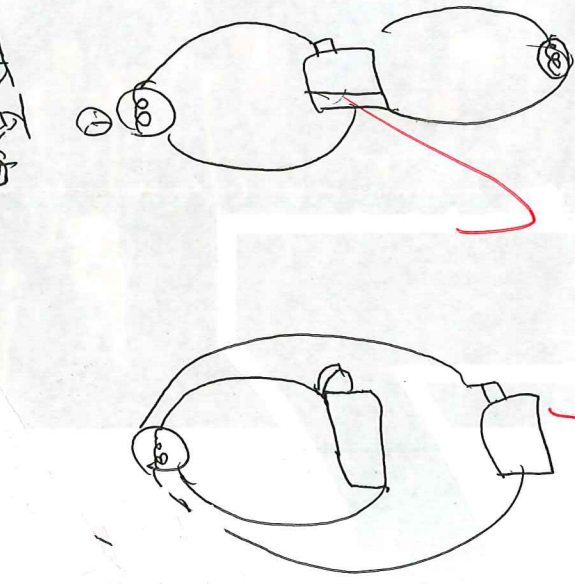
池並



②燈串



燈並



老師你好嘢。good

燈串聯較唔  
並聯不變

我也想  
但你要多注意聽

4107

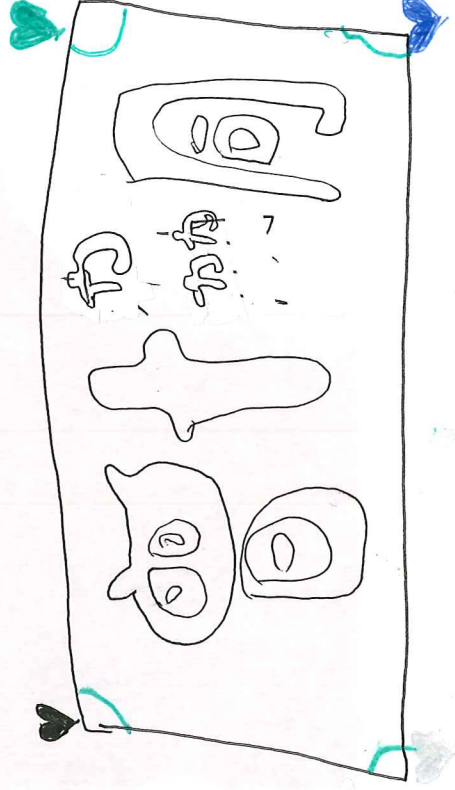
4107

f7 ①

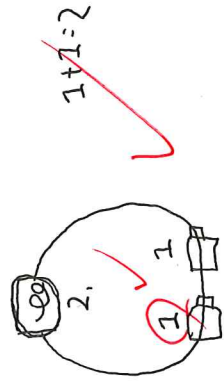
- ①銀
- ②金
- ③銅
- ④鐵

容易導電的物質

4107

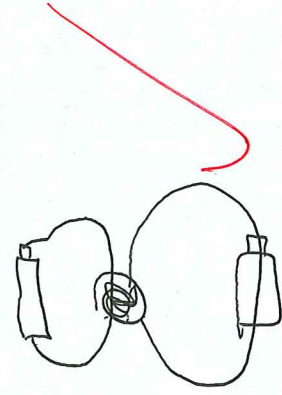


池串 = 電池串聯

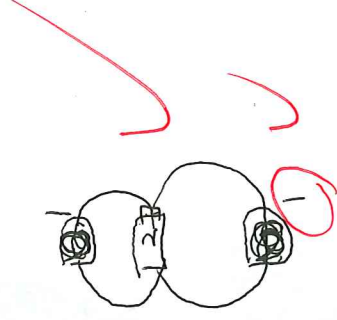


燈串 = 燈泡串聯

池並電池並聯

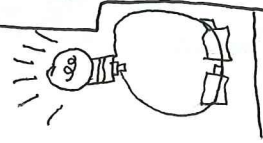


燈並 =



池串

1.



池並

2.

3.

4115

4115

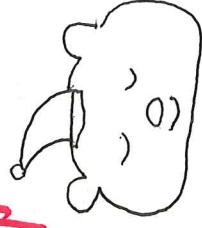
① 4115

百軒老師是世界上最帥的師傅

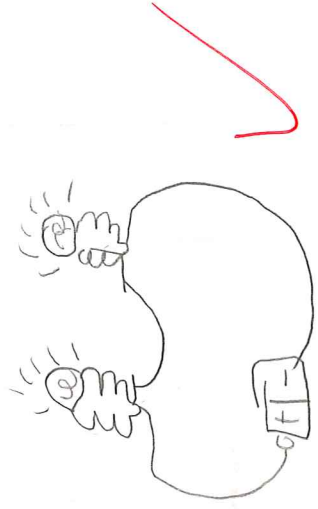
parents

Yes!

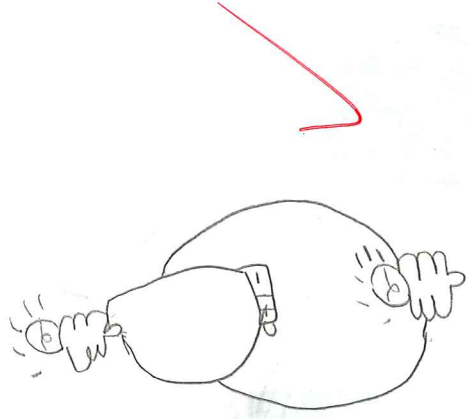
世界上最帥



燈泡串聯

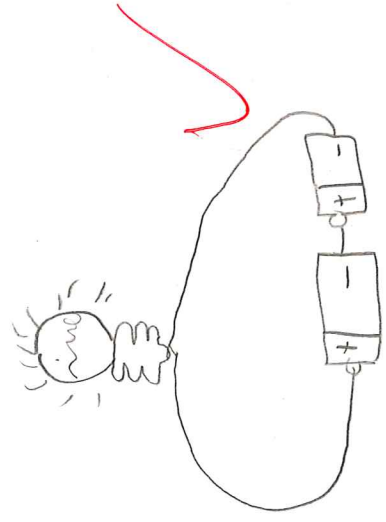


燈泡並聯

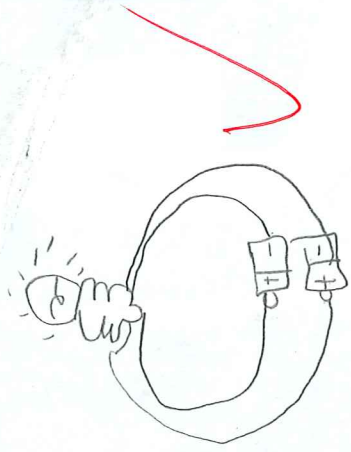


+4①

電池串聯



電池並聯



漂亮  
好看!  
good

4118



洪妮妮命